



# GAT MONTHLY MEMBERSHIP PROGRESS REPORT

Results as of: 2/28/2023

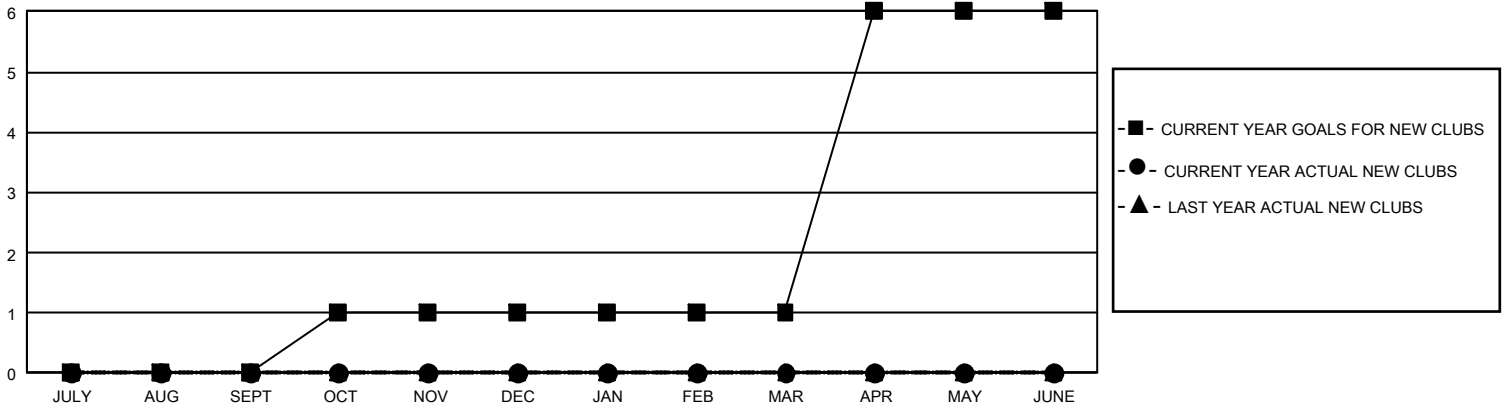
## GMT Constitutional Area 7, Group B

REPORT DOES NOT INCLUDE CLUBS IN UNDISTRICTED AREAS.

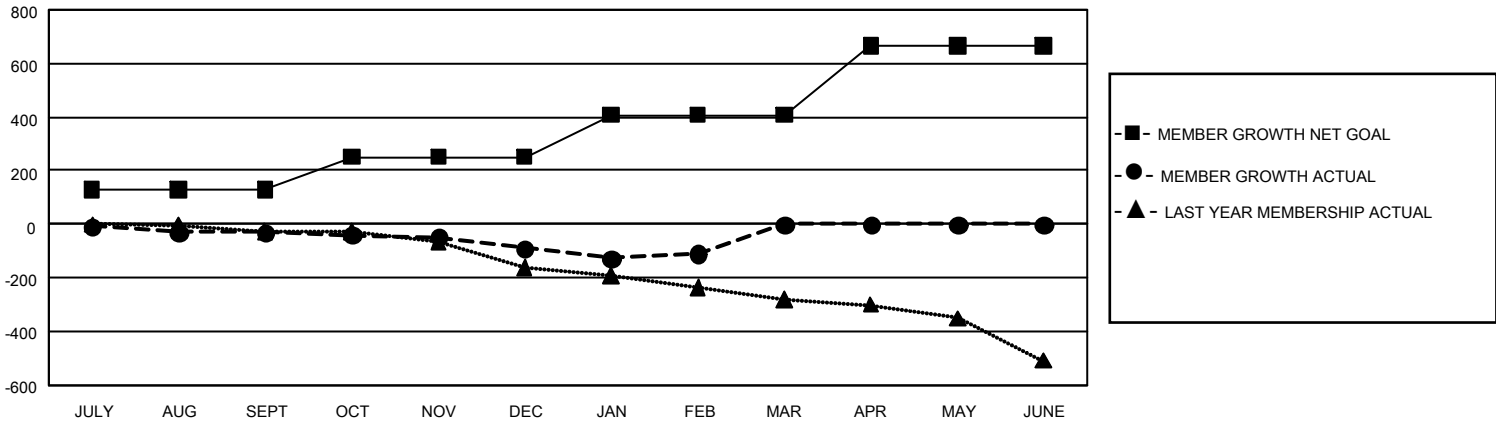
Clubs			
RESULTS FOR 2022-2023			
QUARTER	NEW CLUB GOAL	NEW CLUBS	DROPPED CLUBS
JULY/AUG/SEPT	0	0	3
OCT/NOV/DEC	3	0	2
JAN/FEB/MAR	0	0	0
APR/MAY/JUNE	15	0	0

Members			
RESULTS FOR 2022-2023			
QUARTER	MEMBER GROWTH NET GOAL	MEMBER GROWTH ACTUAL	DROPPED MEMBERS ACTUAL (including transfers)
JULY/AUG/SEPT	128	160	161
OCT/NOV/DEC	123	166	216
JAN/FEB/MAR	157	84	95
APR/MAY/JUNE	257	0	0

GOALS AND ACTUAL NEW CLUBS CUMULATIVE



GOALS AND ACTUAL MEMBERS CUMULATIVE



<b>DROPPED CLUBS: 5</b>	158 CLUBS OF 310 ADDED 1 OR MORE NEW MEMBERS	<b><u>GENDER DISTRIBUTION</u></b>	
		MALE 5,392 (67.38%) FEMALE 2,609 (32.60%) NON BINARY 1 (0.01%) PREFER NOT TO ANSWER 0 (0.00%)	TOTAL FAMILY UNIT MEMBERS 775 FAMILY MEMBERS PAYING HALF DUES 390
<b><u>DROPPED MEMBERS</u></b>		<a href="#">CLICK HERE FOR CUMULATIVE MEMBERSHIP DATA</a>	
DECEASED 87 CLUB CANCELLED 19 OTHER 368 <b>TOTAL 474</b>			